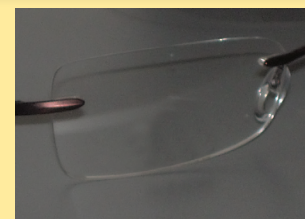
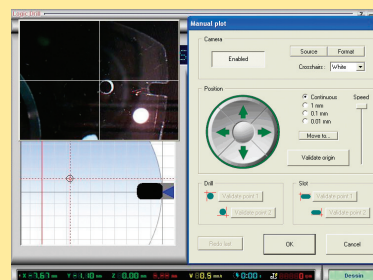


Logic Drill²



**PRODUCE
TOP
QUALITY
RIMLESS
JOBS IN
HOUSE
FROM AS
LITTLE AS
£2.70 PER
JOB***

The logic drill provides value for money and is currently used in many environments. It is equally at home in the mass production workshop as well as the in-store laboratory glazing all types of rimless and ornamental work.

ADVANTAGES

Produce quality rimless in house

Easy to use computerised drilling

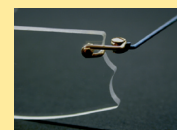
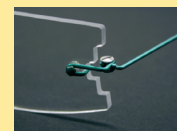
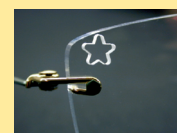
Drill rimless jobs in under 5 minutes

Compatible with all makes of equipment

No rimless experience required as full training given

**CALL TODAY TO ARRANGE
A DEMONSTRATION**

eye^d



- *
1 All finance subject to status.
2. £2.70 based on 28 rimless per month over 5 year period, for illustrative purposes only, leasing can be arranged for almost any period to best suit your budget.
3. No deposit necessary.
4. Assumes a 40% taxpayer.
5. For business purposes only.



Mainline

OPTICAL CONNECTIONS LTD

Phone: 01377 257752

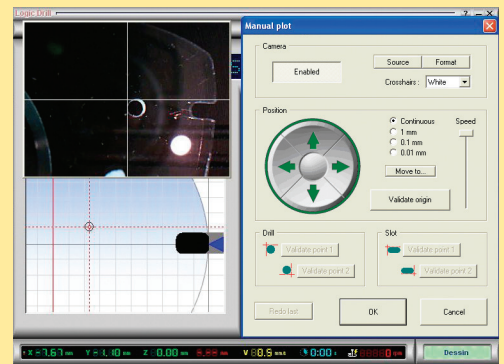
email: info@mainline-opticalconnections.co.uk

www.mainline-opticalconnections.co.uk

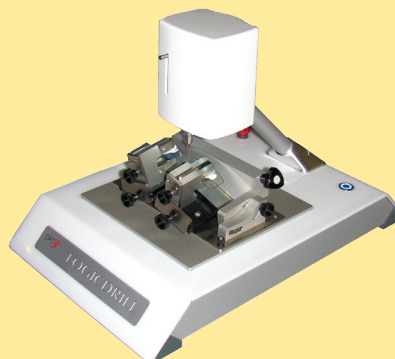
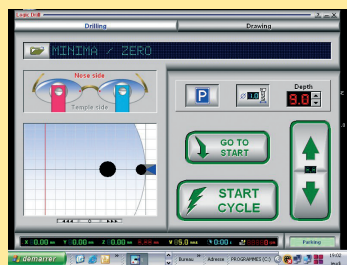
Logic Drill²

Camera assisted mapping

The camera allows accurate mapping of hole and slot data where the manufacturers information is not in the database or available. The software and camera allow accurate plotting of the holes and slots, taking into account the angle that the lenses are drilled at. Any data taken will be saved into the database for reference at a later date.



Easy to use process



1 Call up data

2 Position and drill lenses

3 Assemble frame

Individual

eye.d



The logic drill allows reproduction of the eye.d range of decorative engravings, shape changes and the attachment of "Fashion Stones" from a database which is updated via the internet.

Technical Specifications

System Requirements	Windows 98 or above
PC Connection	USB
Power Source	240 volts
Dimensions	28cm x 50cm x 34cm
Weight	13kg
Finish	White

